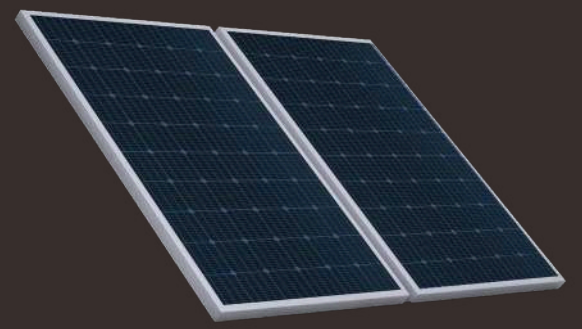


CONFIGURATION



SOLAR PANEL



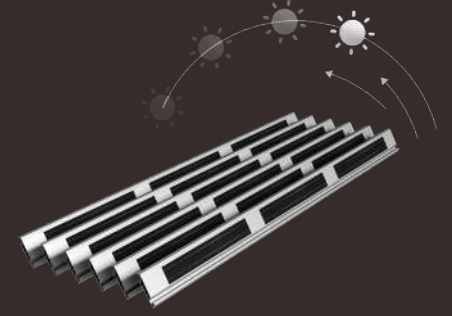
550W
34kW Max (13.5mx12m)

Cover the large areas with the enhanced structure of Solar Panel by advanced technologies of QTECH. The horizontal endless view applies protection and solar harvesting zones in usage areas. The improved solar panels present a sustainable energy source that can be transferred to any desired area with the inverter support in all solar technologies of QTECH.



SOLAR LOUVRE PHOTOVOLTAIC

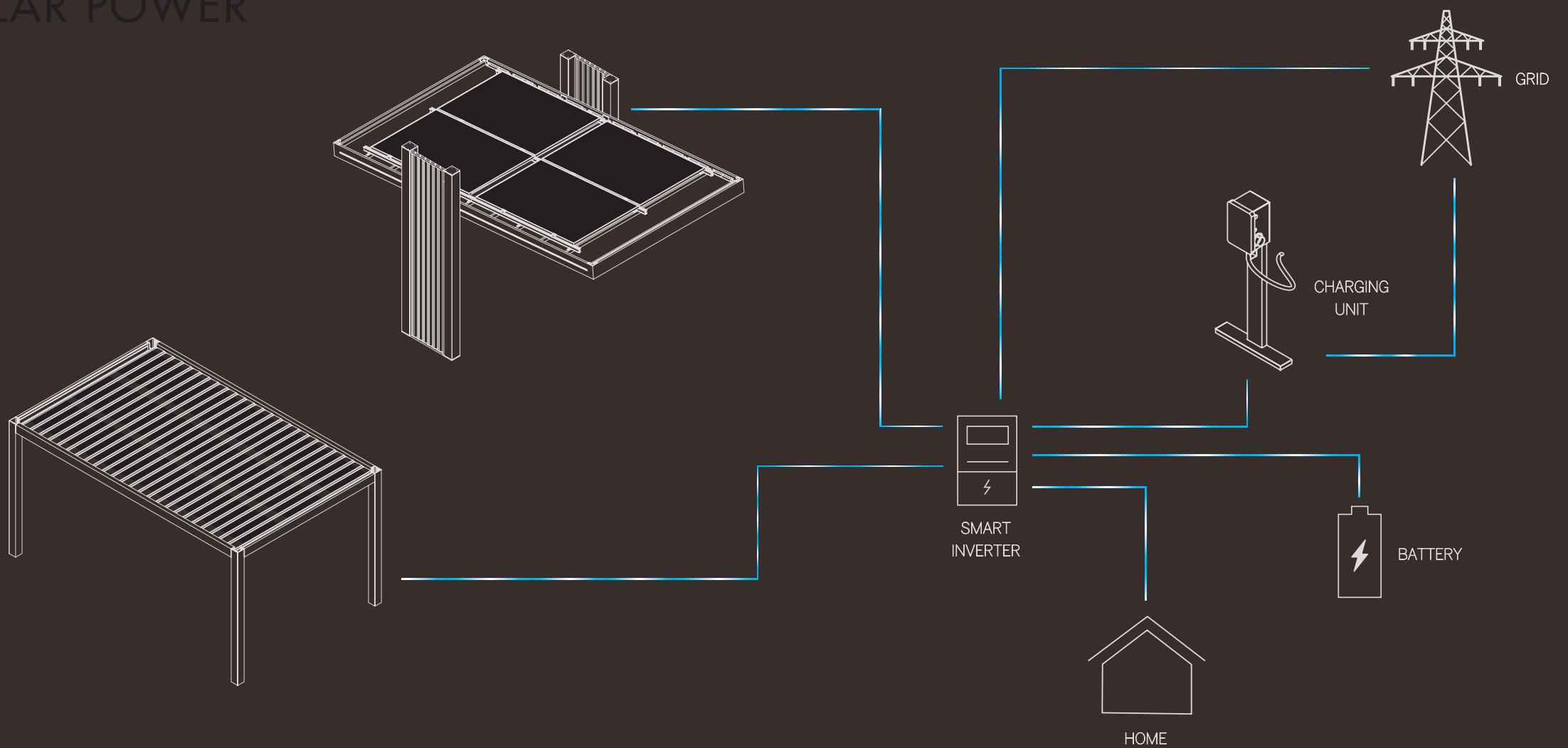
Sun Tracking System



40W
20kW Max (13.5mx12m)

QTECH is embracing a sustainable future with green energy, maximum efficiency through our innovative designs, and high quality materials used for solar panels that can be integrated into various louvre types and also independent customizations with larger panels. Control the energy with one touch. Customize solar panel tracking systems to match the panel configuration of a specific movement with QTECH technologies.

SOLAR POWER





SOLAR CHARGING UNIT

QTECH solar charging unit to canalize the energy consumed through lay out in the most effective way. The sustainable technology enables users to harvest the sun by advanced integration of QTECH modules in usage areas. With the touchscreen interface and app integration, users can check the power consumption or storage usage easily.



HEATECH & AUDIUM

Innovative, aesthetic, and functional. Heatech & Audium high-tech heater and sound system maximises the efficiency of outdoor areas by improved functions. System can be integrated to modern bioclimatic systems with matching design lines and also can be used as independent modules.

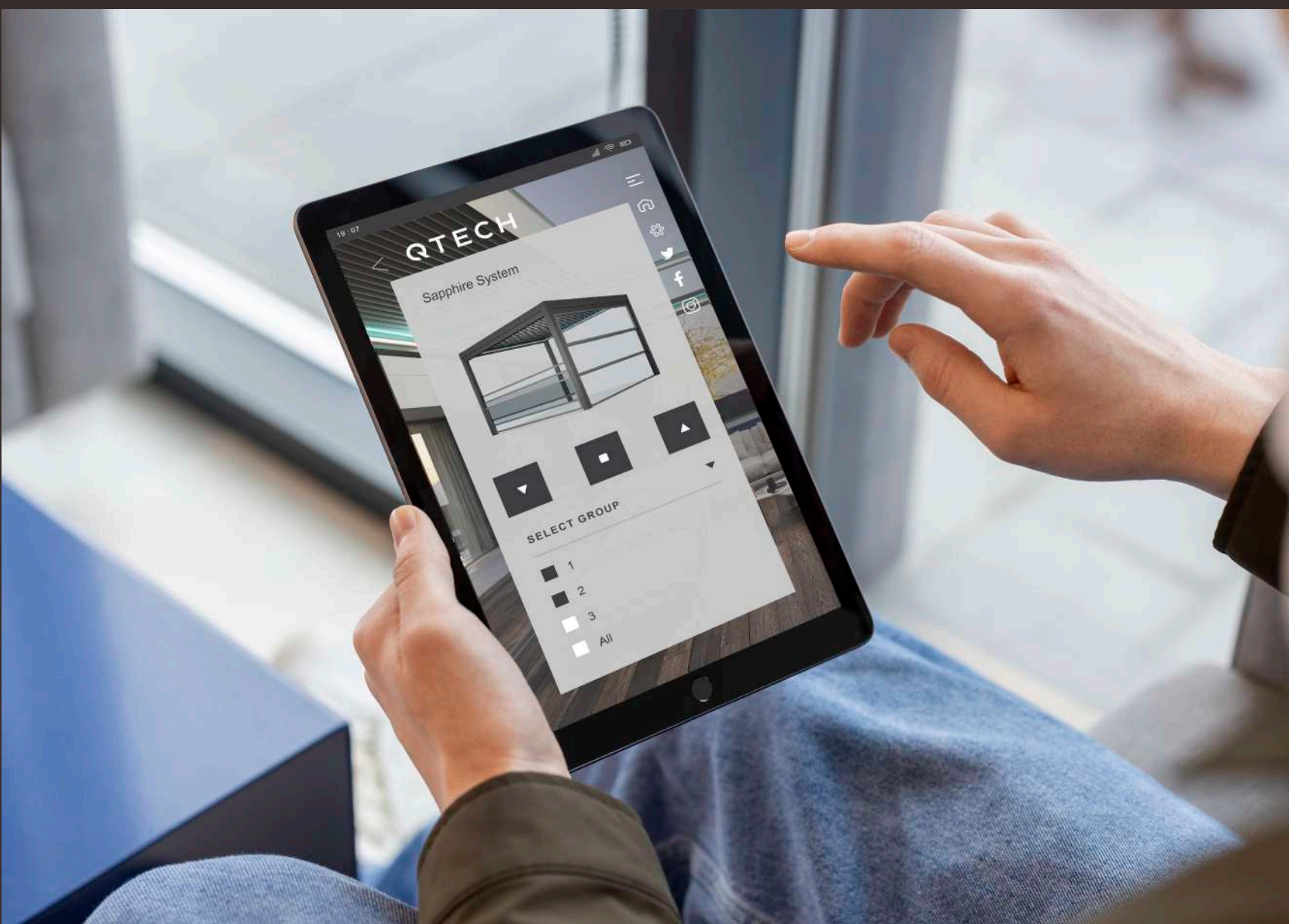


OPAQUE

TRANSPARENT

SMART GLASS

Change the ambient with one touch technologies of QTECH. The smart glass integration creates usage areas with the dimmable glaze shading option to protect from exterior factors such as rain, sun, etc. The natural lights illuminate the usage areas during the day and transparency option for a clear sky view at night for the quality of life experiences.



Q APP

QTECH technologies provide a life with ease of use by advanced programs for interior & exterior living areas. The apprehensible interface of the Q APP enables users to control QTECH technologies through their smart devices with one touch.